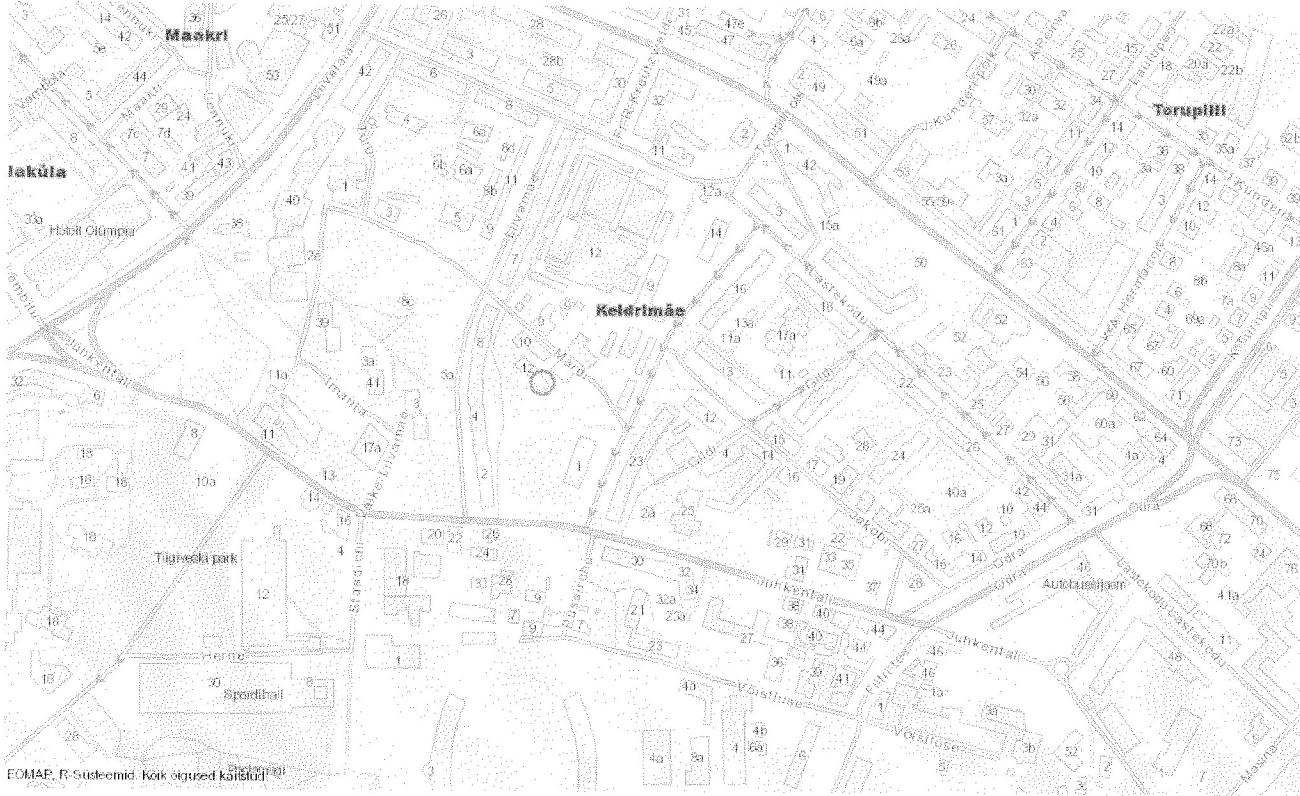
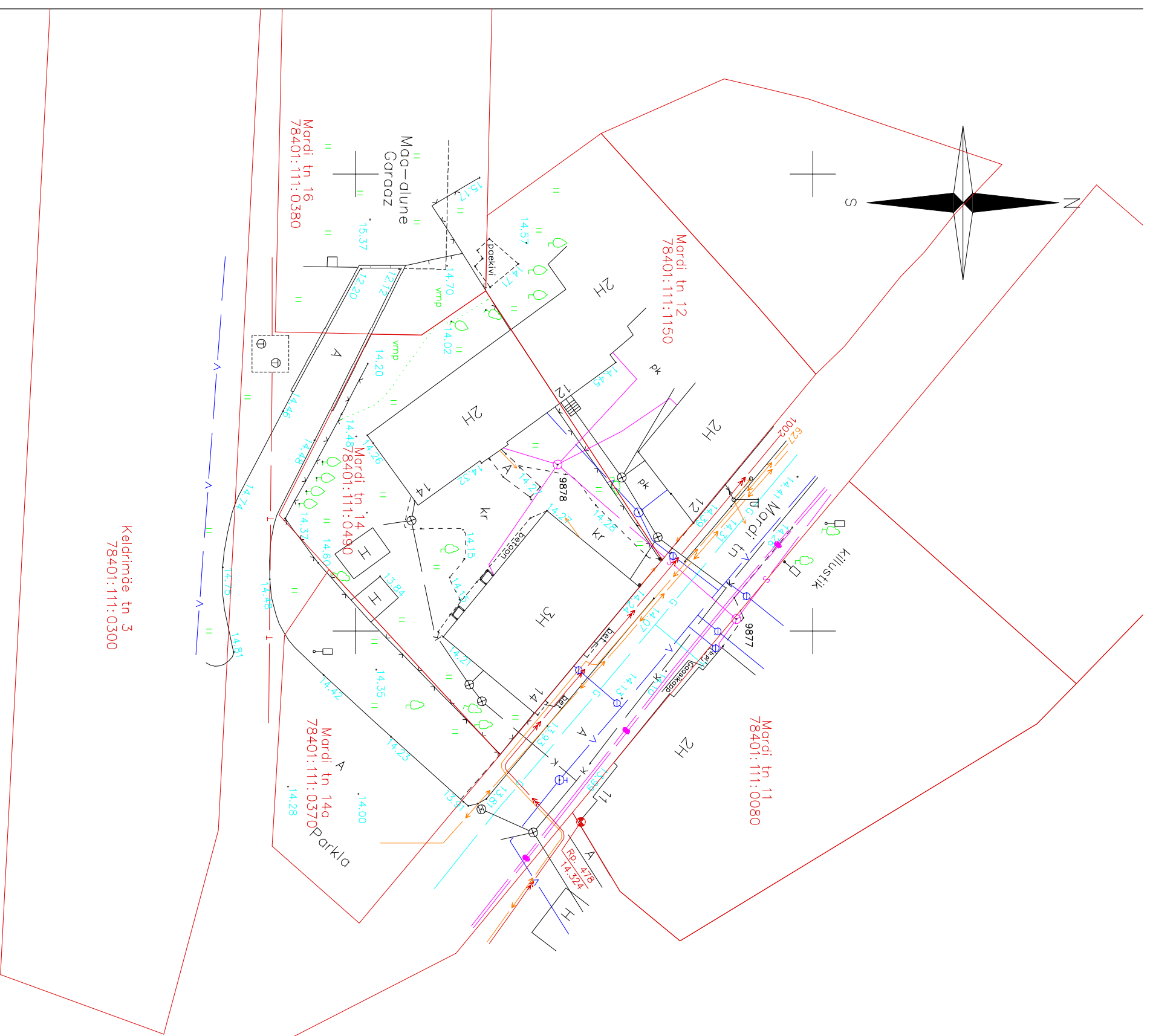


Tallinna kaardirakendus



Info:



Keldrimäe tn 3  
78401:111:0300

Mardi tn 11  
78401:111:0080

Mardi tn 14a  
78401:111:0370

Mardi tn 16  
78401:111:0380

X = 6588150  
Y = 543500

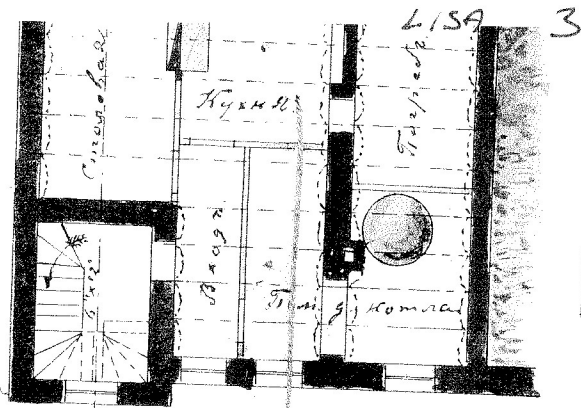
KOOSKÕLASTUSTE TABEL

Kooskõlastaja	Kooskõlastuse nr.	Kooskõlastuse kuupäev
OÜ Jootusvärk	8446	01.10.2008
Eesti Gaas	1655	01.10.2008
ELIUM ETTEVÕTTED AS	8764944	01.10.2008

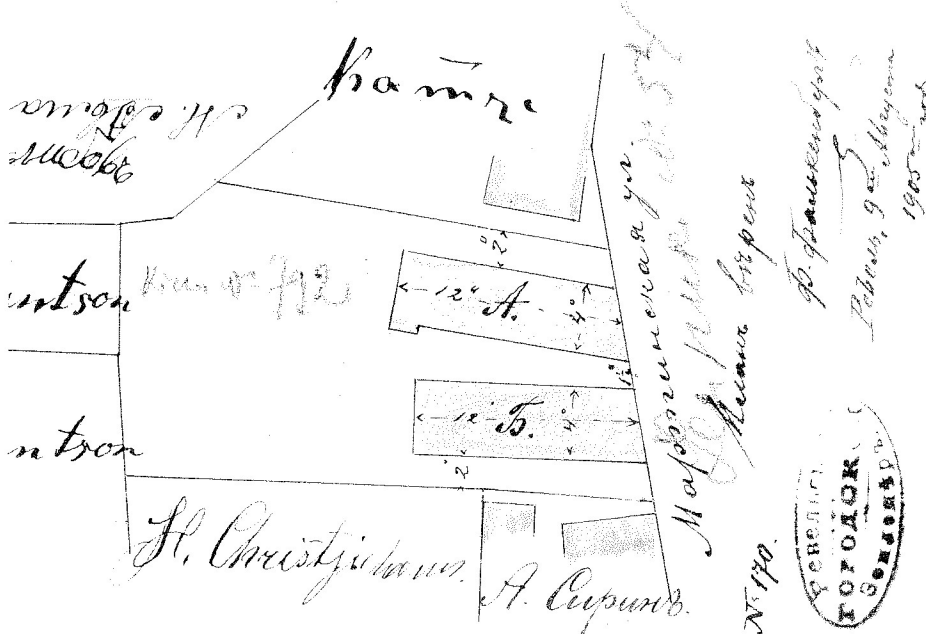
Märkused:  
Koordinaadid L-Est 97 süsteemis  
Kõrgused Balti süsteemis

Töö nimetus	Tallinn, Kesklinna linnoosa Mardi tänav 14		Töö nr.	C 021 c 08	Mõõdistuse liik	Maa-ala plaan Tehnovõrkudega
Mõõdistas	Andres Erit	Mõõt:	1:500	Kuupäev:	30.09.2008	ÕÜ GEOCHART
Joonestas	Andres Erit	Lehiti:	1	MTR NR:	EEG000094	Mustamäe tee 29-25 Tallinn, 10616 tel: 56609222
Vastutab	Meelis Braun	Lehti:	1	LITSENTS	619 MA	e-mail: andres@geochart.ee

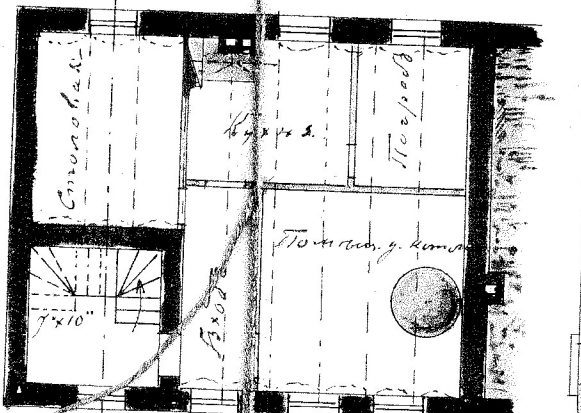
му на моем участке в 3<sup>ей</sup> части  
 в тинской улице №12 деревянные  
 этажные фальсы дома Лит А и  
 оплеме домов в центральное тепло-  
 кое. Крыши половые.



# Схема Котте



Полвал. этаж дома Б.



плане рассмотреть и утвердить  
 Градской Управа в заседании 12 октября 1905 г.  
 чтобы взыскать по даче виль располо-  
 жении участка, а не между зданиями  
 в Градской Управе, с августа 1905 г.  
 в уезде Гусова ул.

Инженер Яков  
 Градской Секретарь

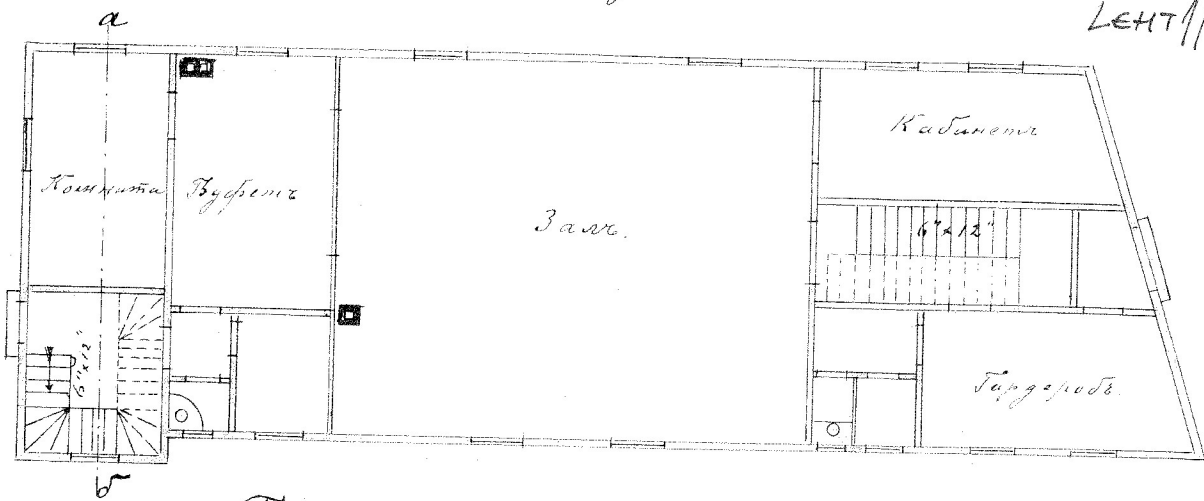
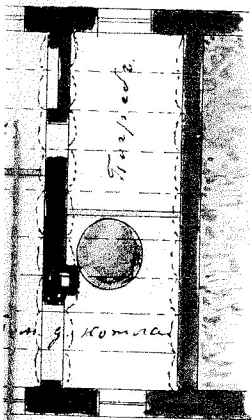
Объем 7653210

наръбана А.

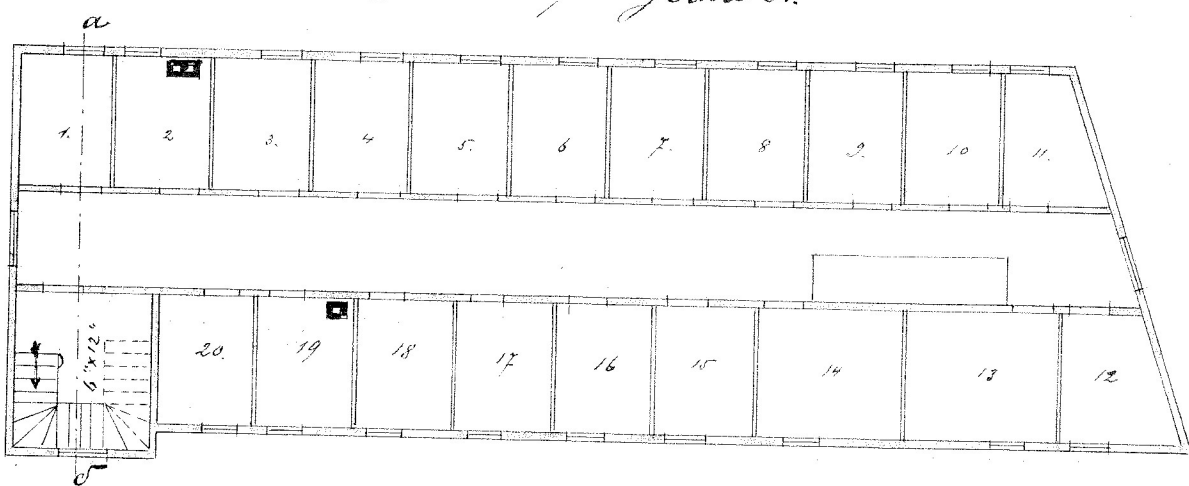
Планъ I<sup>го</sup> этажа дома А.

LISA 4.

ЛЕНТ 1/2

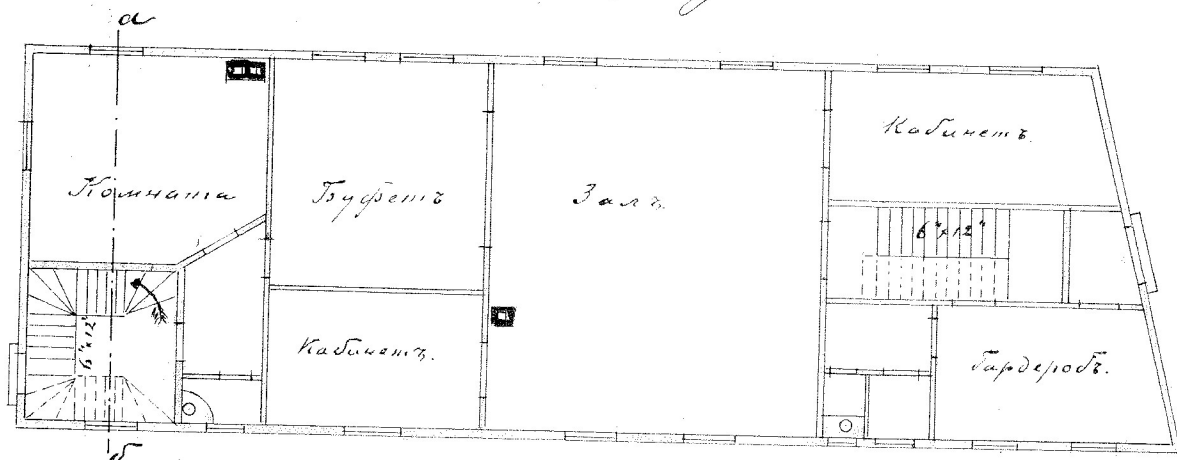
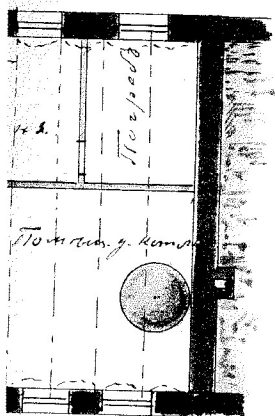


Планъ II<sup>го</sup> этажа дома А.

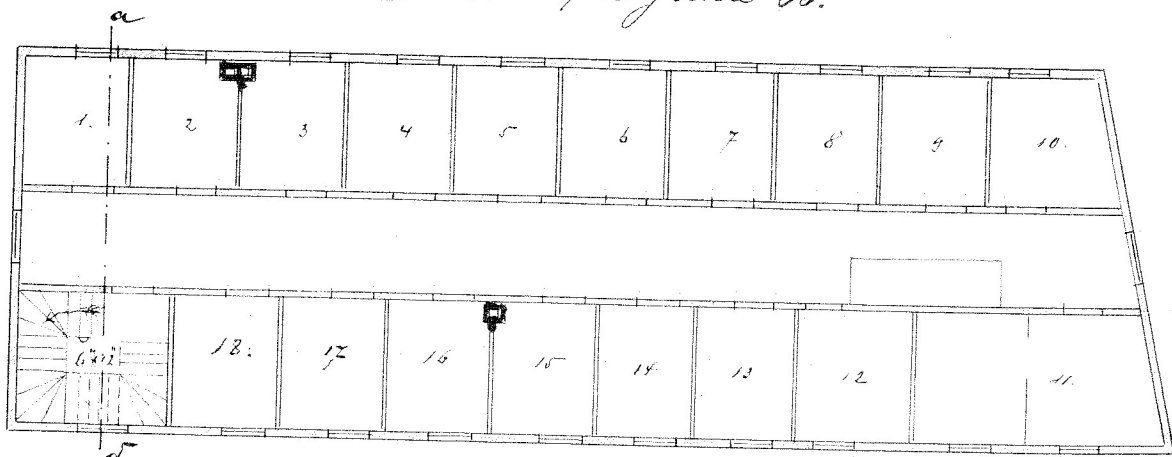


наръбана Б.

Планъ I<sup>го</sup> этажа дома Б.

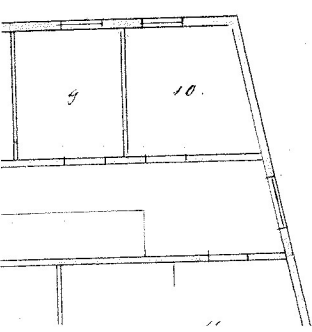
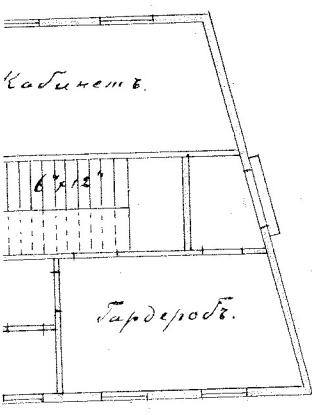
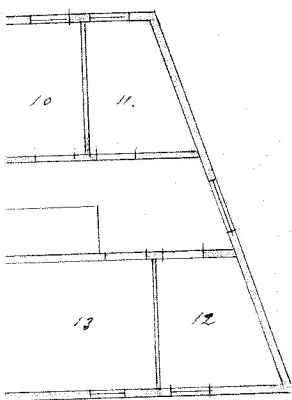
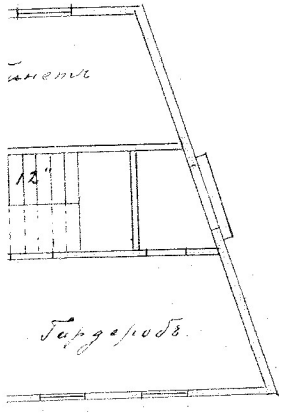


Планъ II<sup>го</sup> этажа дома Б.

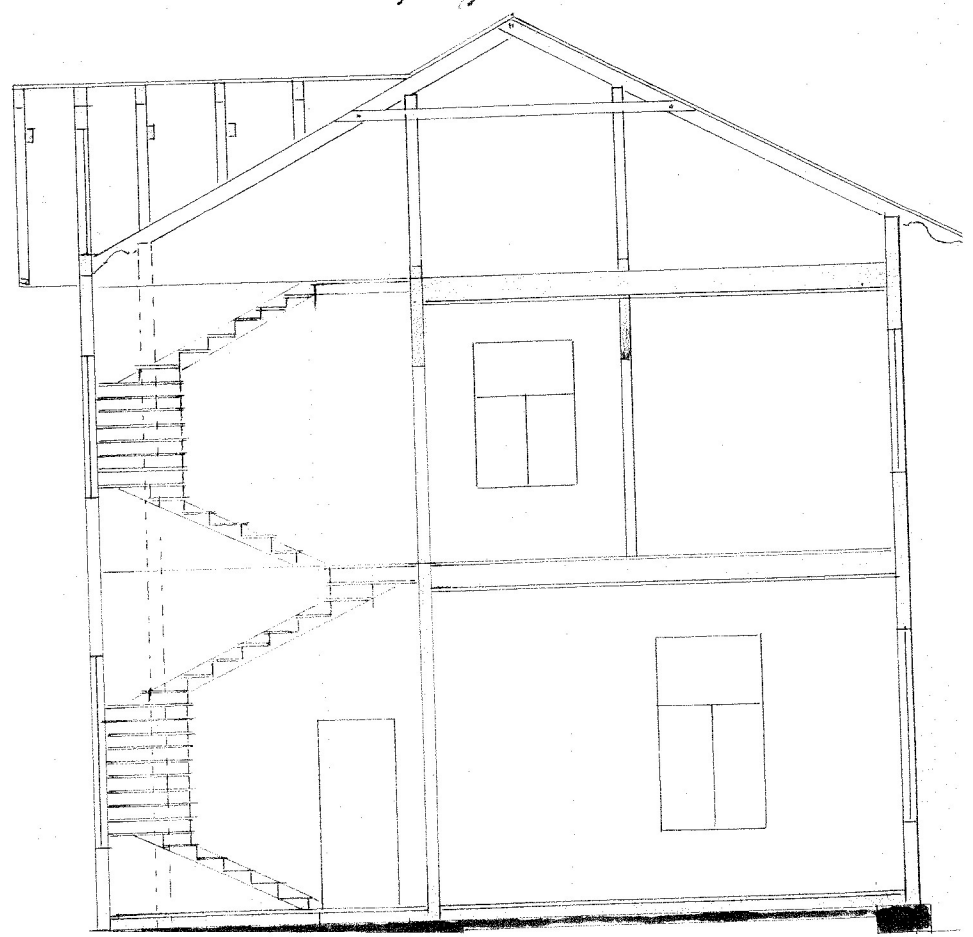


4.

Фасады домов А и Б.



Разрез по а-б.



LISA 5  
 Lisa projekt ehitatava kivist elu-  
 maja kohta ja puust kuuri pro-  
 jekt Mardi tän. N:12, krep. N:792.

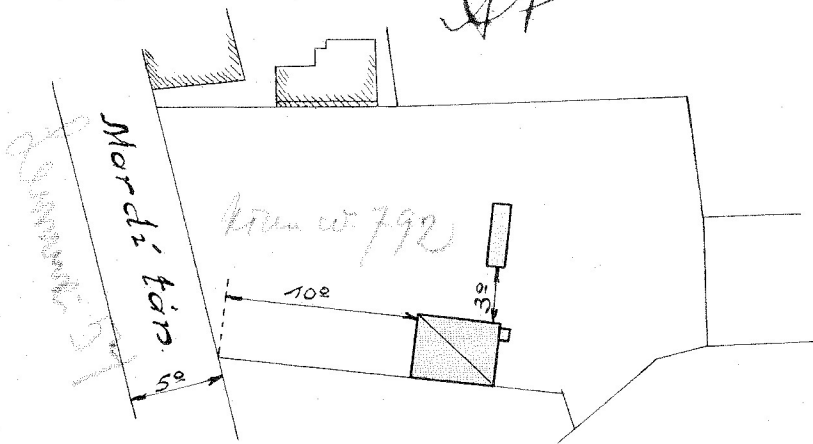


Tempelmarke kustutatud

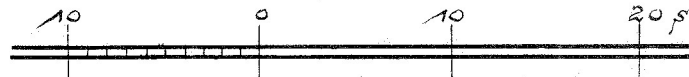
Mk. 10 väärtuses.

Tallinn, 3.11.1925

A. Johanson



Ruudupindala  
 5.11.1925 R. J. J.



See plaan on Tallinna linna valitsuse  
 koosolekul 6/11/1925 järel vaadatud  
 ja kinnitatud järgmistel tingimistel.

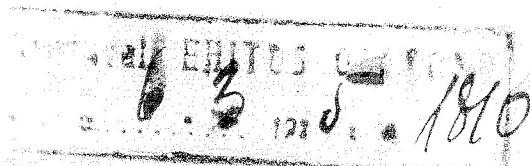
6. märts 1925 a. N: 2723

Linnapea:

Linna arhitekt:

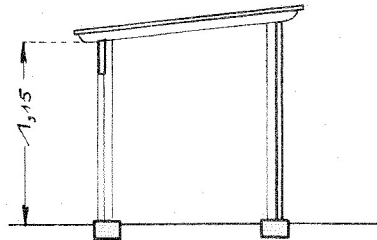
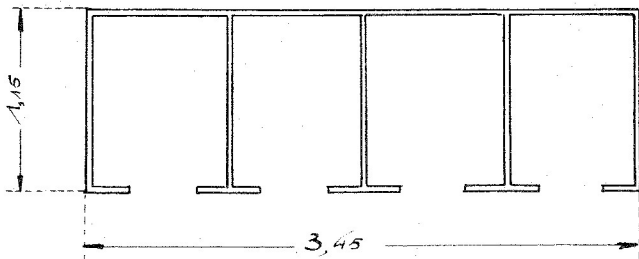
Sekretäär:

A. Johanson  
 M. J. J.  
 I. H. H.  
 E. E.



Kuuri plaan.

Kotuse katel...



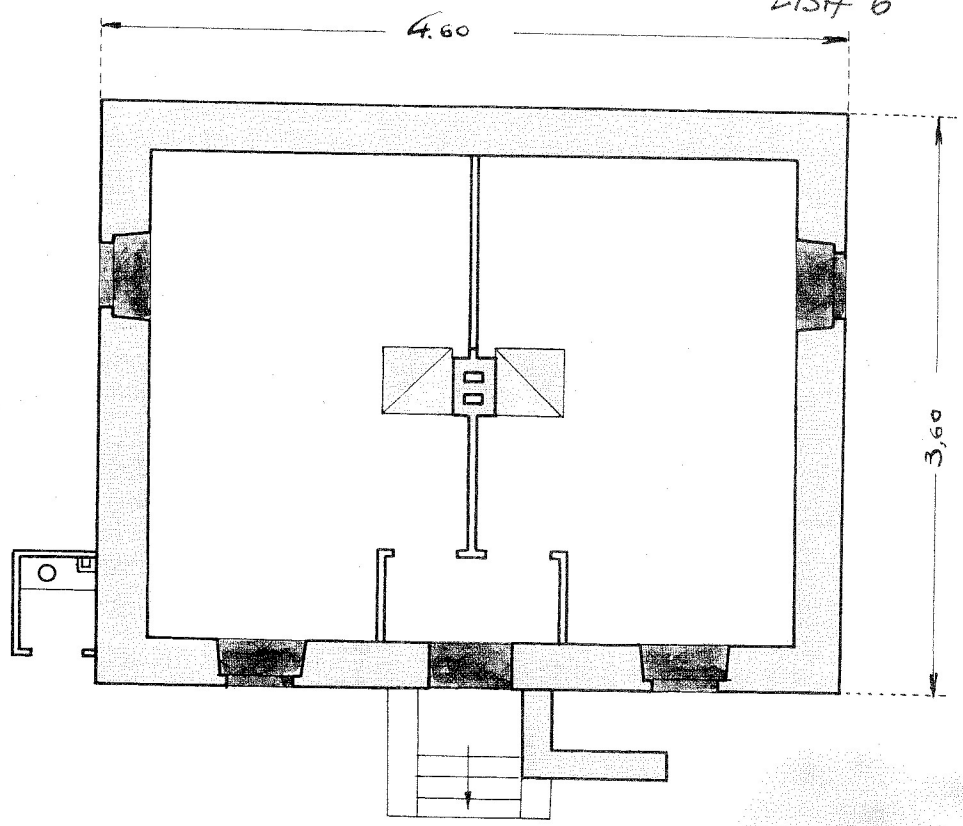
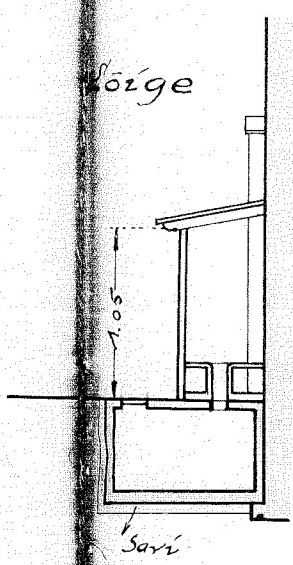
1 0 1 2 3 4 5 s.

-  
0-  
3.

LISA 6

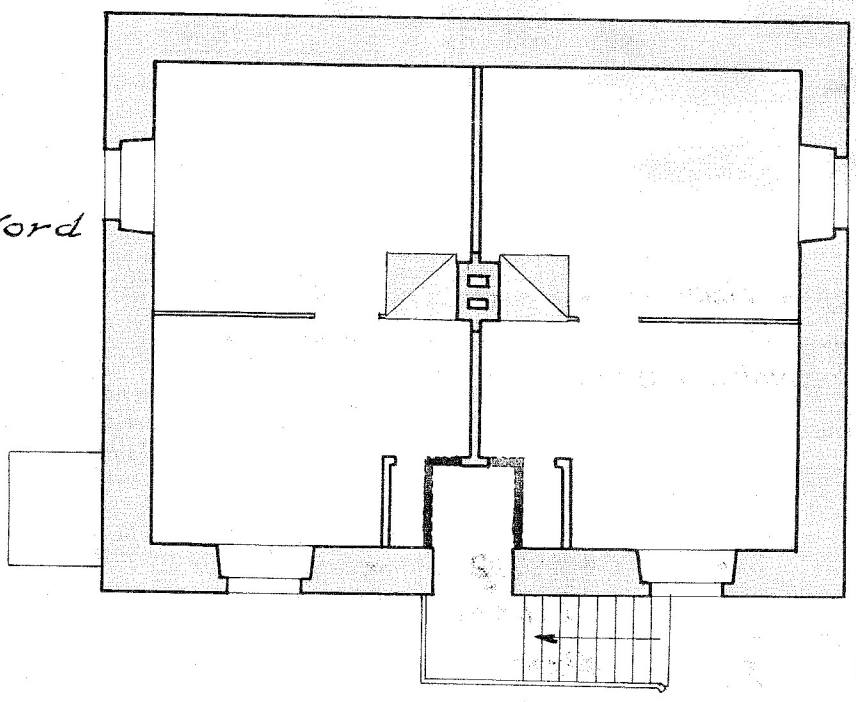
2/20

Göige



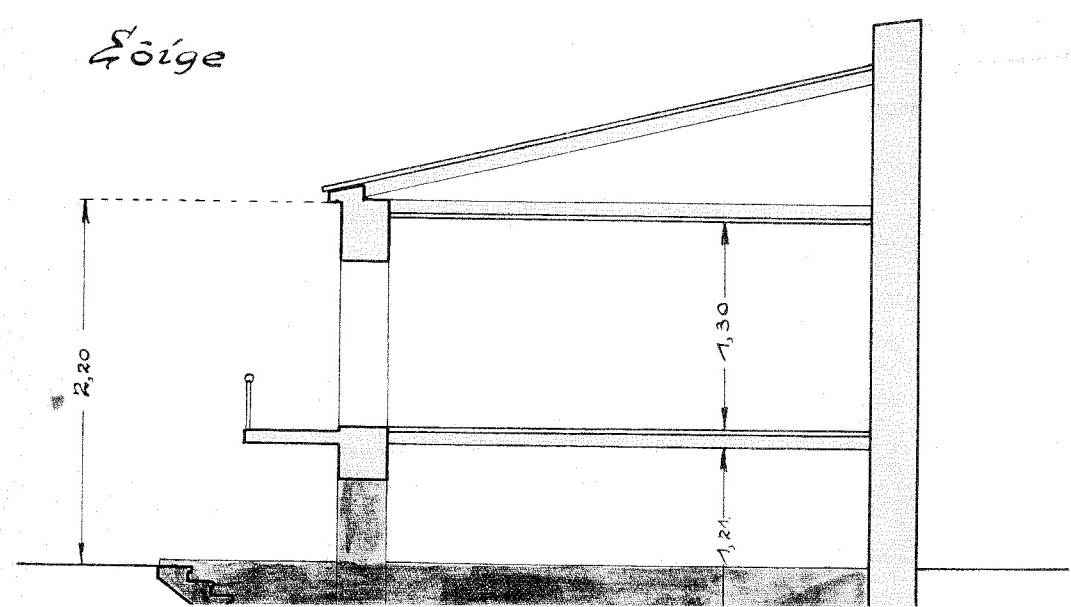
äiped.  
ut

Ösimene Kord



Fuse kateks papp.

Göige



15

LISA 7

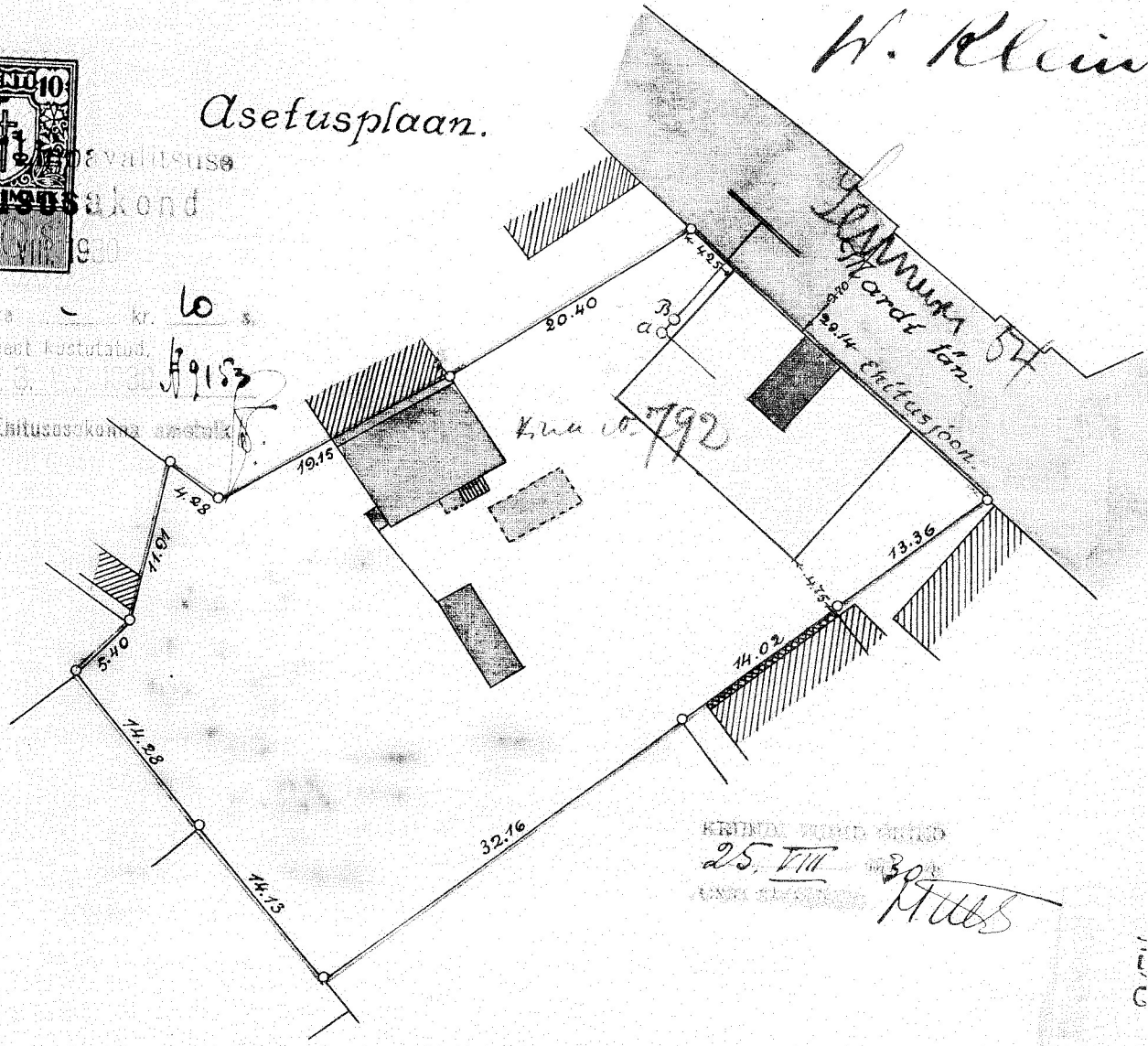
Projekt  
 kahekordse puust elumaja ehitamiseks  
 ja kanalisatsiooni sisseseadmiseks  
 Tallinnas, Mardi tän. №12, kinn. №792.

W. Klein

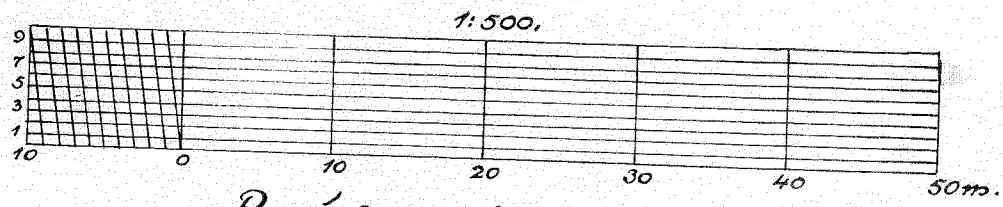
Asetusplaan.



Tallinna linnavalitsuse  
 Ehitusosakond  
 23. VIII 1930  
 Tempelmarka 10 kr. 60 s.  
 eest koostatatud.  
 Tallinnas, Ehitusosakonna ametikohal



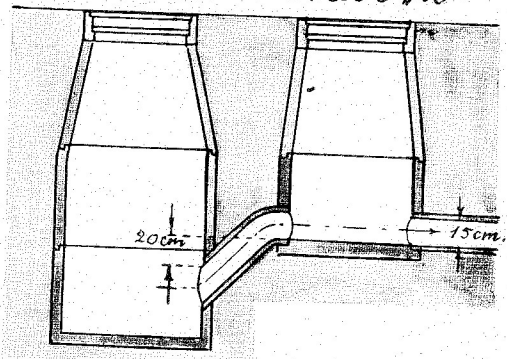
25. VIII 1930  
 M. U. S.



Raiskveekaevud.

Lõige a-b.

Kaev „A” Kaev „B”

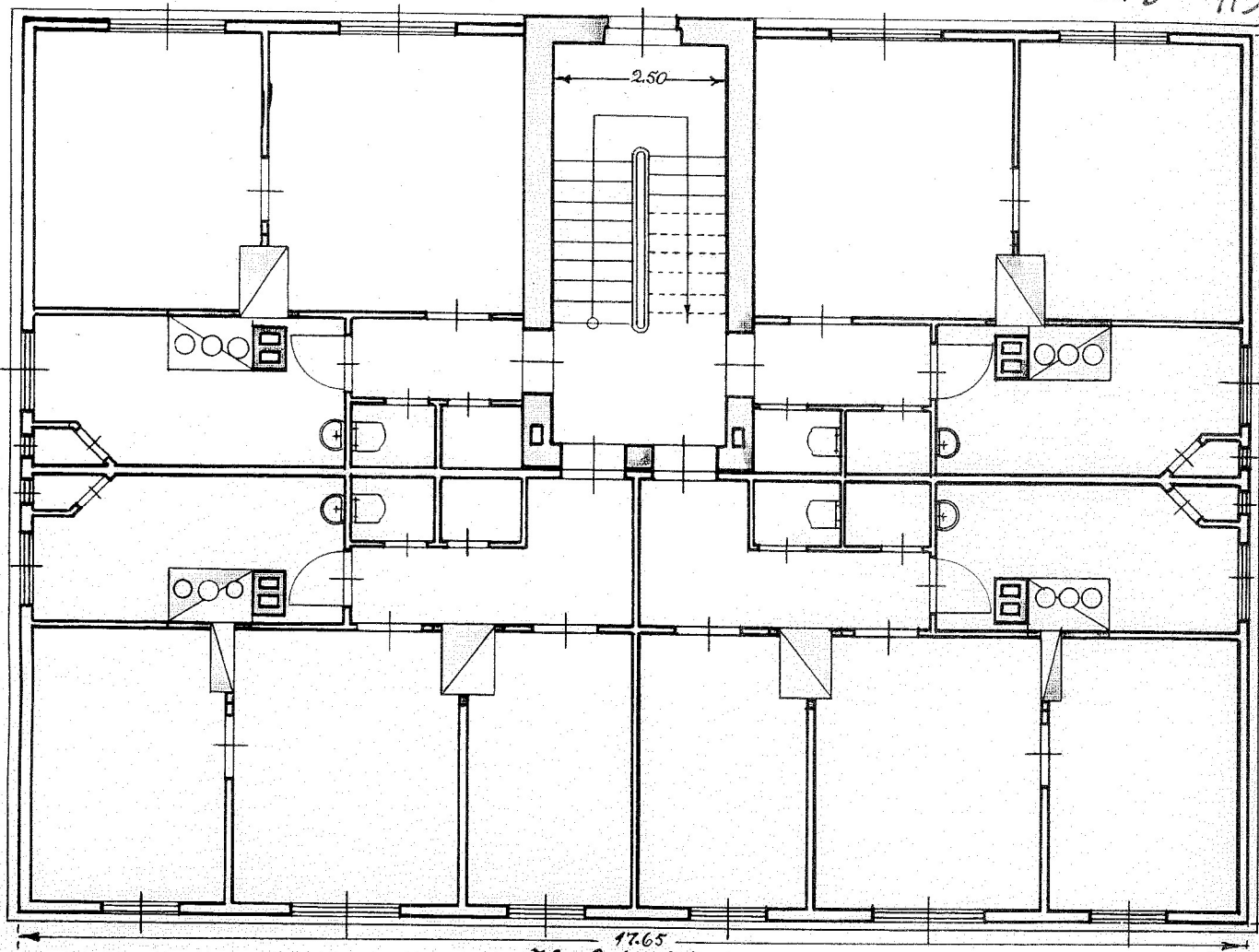


Plaan.

En. Tallinna linna valitsuse  
 arhivilt 1930. aastal saadatud  
 gümnaasiumi tingimustel.

Spetsialist W. Klein  
 Linnaplaneerija  
 Ehitusosakond

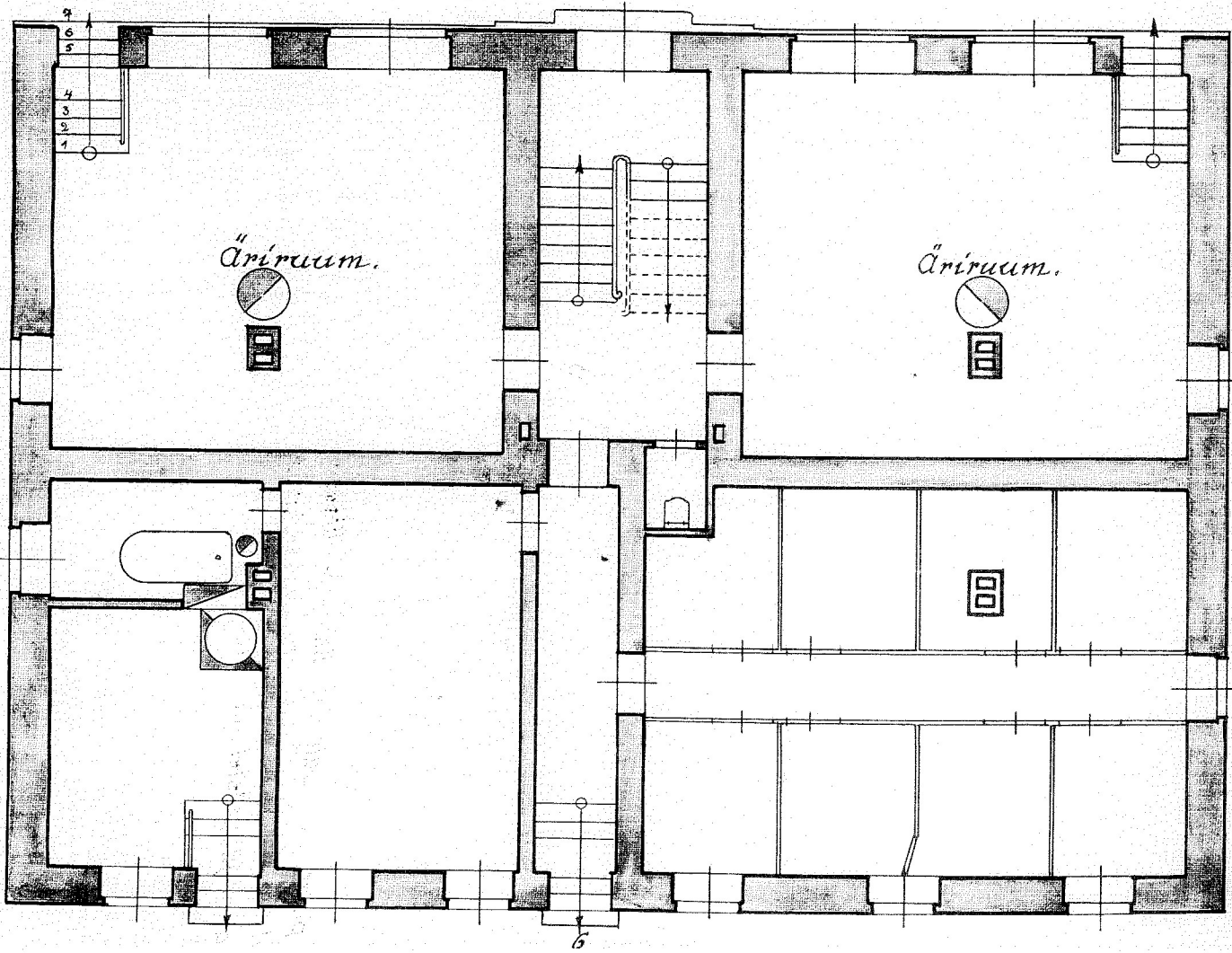


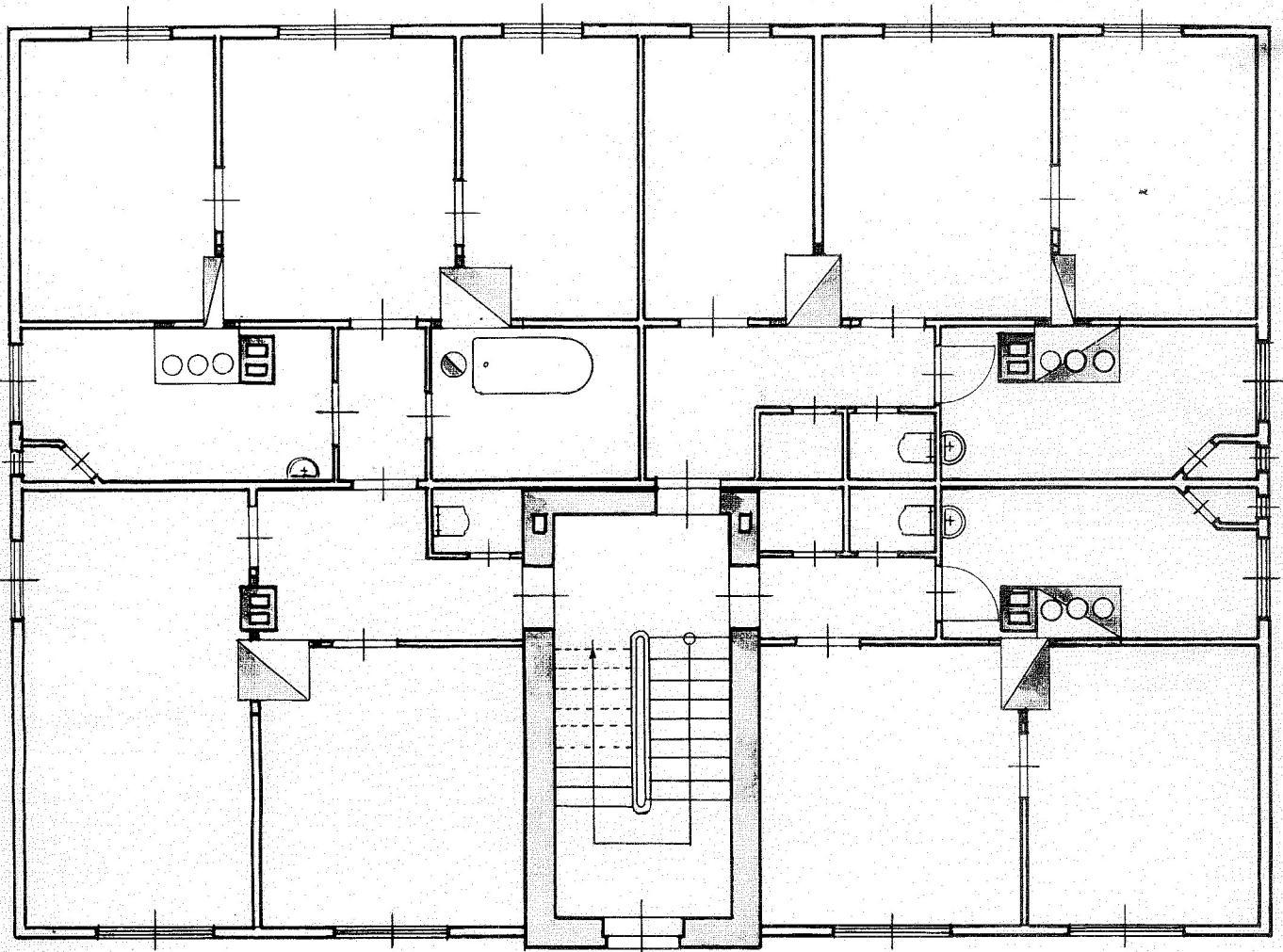


Keldri kord.

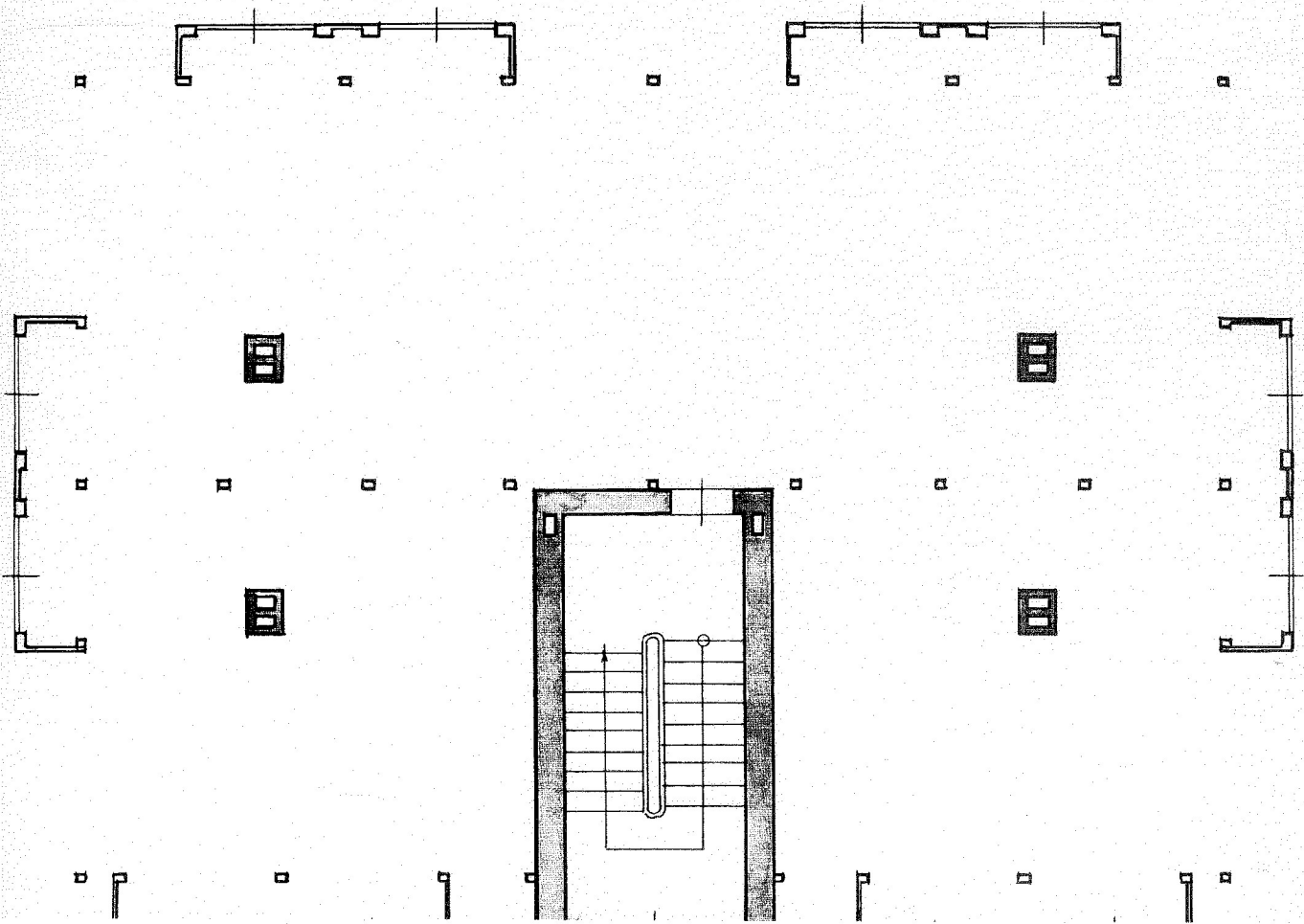
7076.

Sekretariat  
Pravny



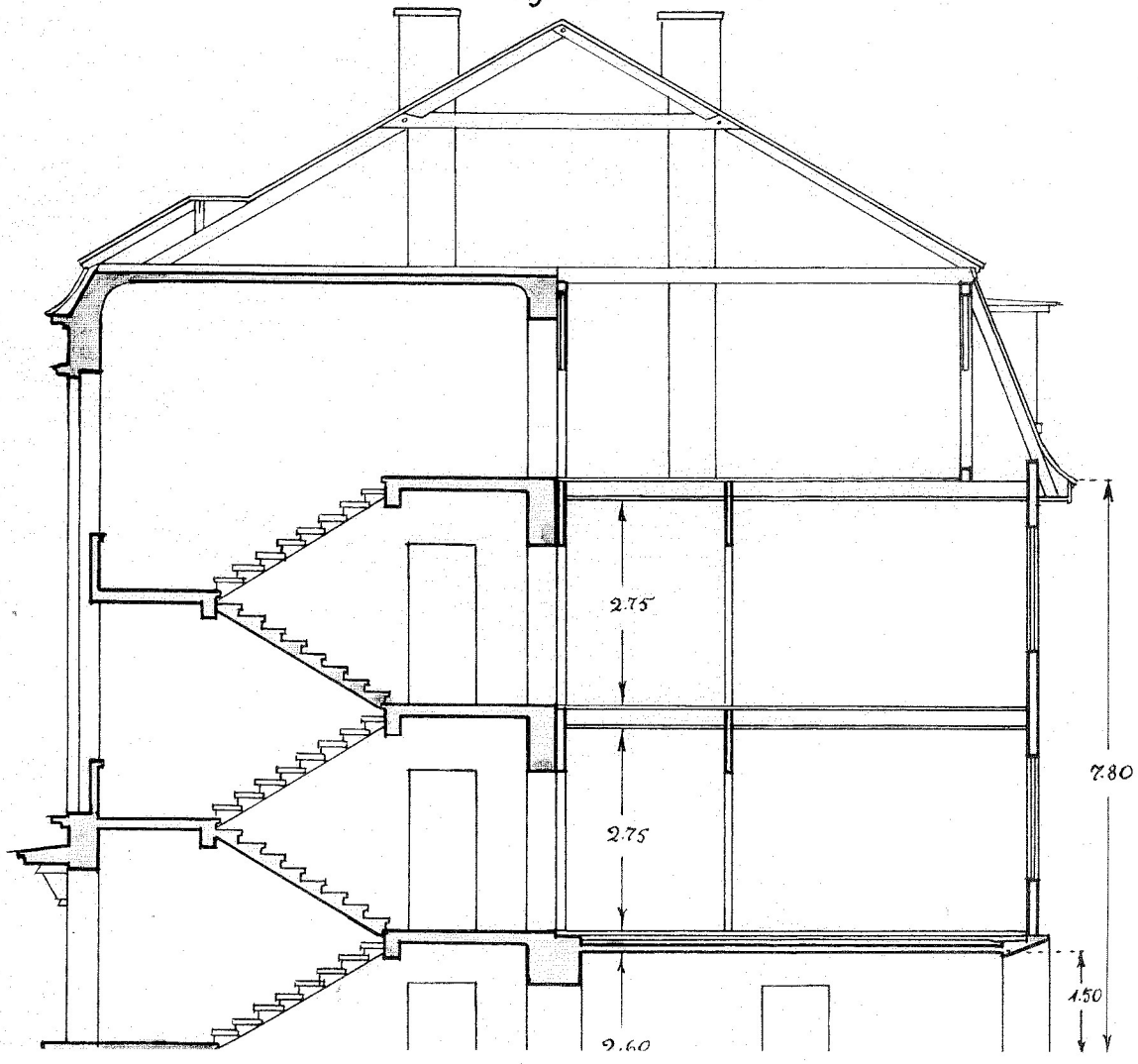


Seine kord.





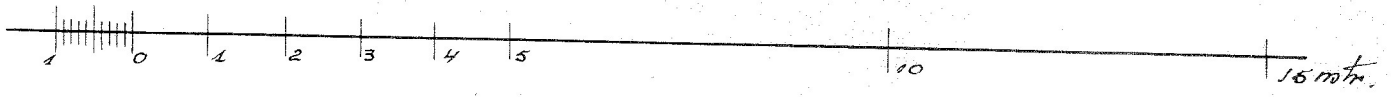
Löiße a-b.



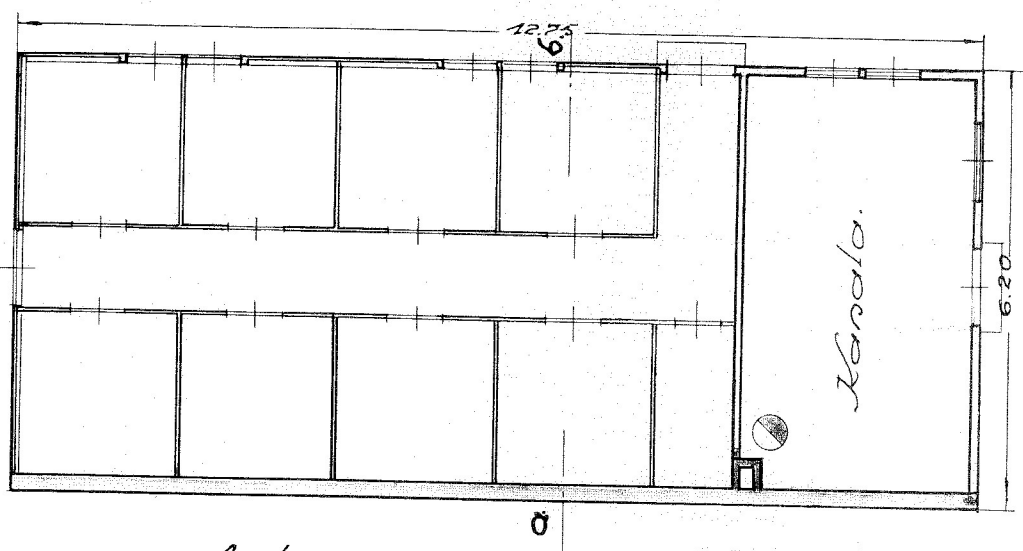
LISA 9



1:100

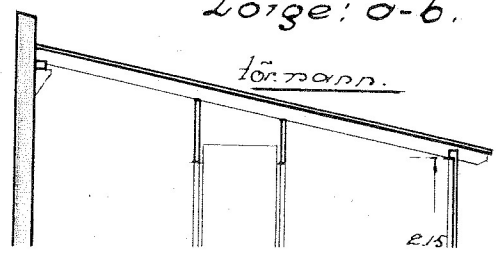


Pöhiplan.



Löjge: a-b.

för rann.



*K. Sundman*  
 Arkitekt 9, 9, 4  
 18.4.31.

# Projekt kahelkordse puust kiuitrepikojaga elumaja peale- ja juurdeehituseks Tallinna, Mardi tän. N 12 kinn. N 792

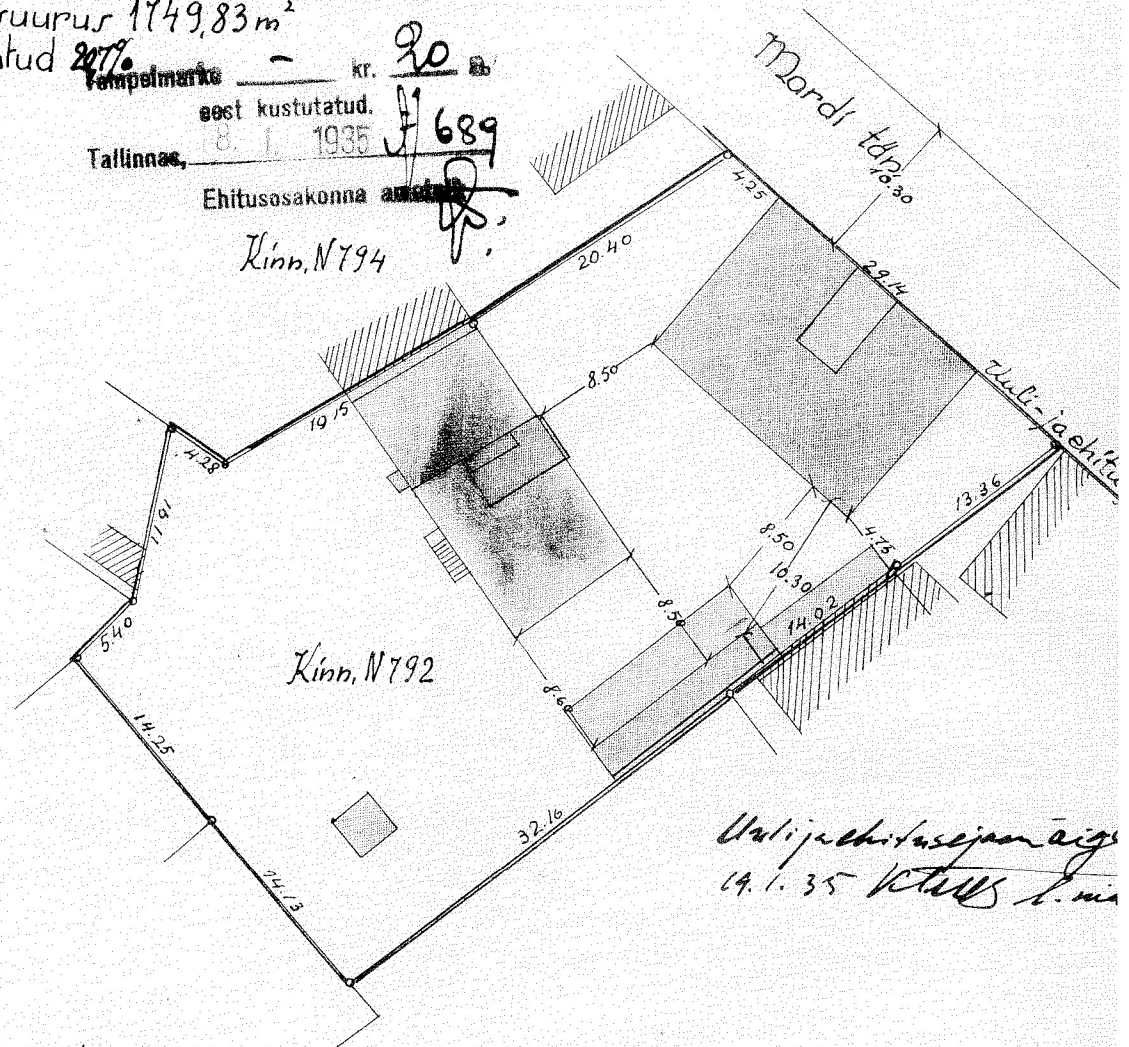
Märkus: Projekt on mõeldud  
kaksikmajana kinn. N 12

*H. Klein*

Asendiplaan 1:500

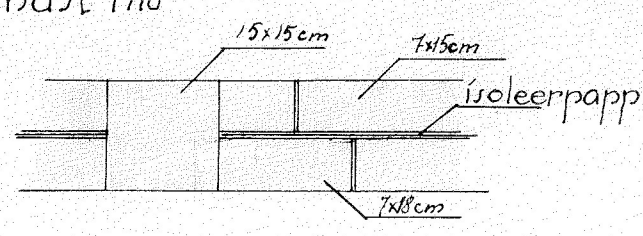


Krundi suurus 1749,83 m<sup>2</sup>  
täiehitatud 207%  
Tempelmark - kr. 90  
eest kustutatud. 689  
Tallinnas, 18. I. 1935  
Ehitusosakonna ametlikult  
Kinn. N 794

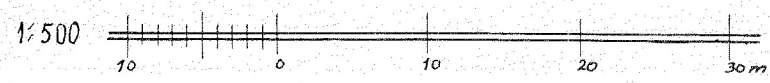


Uulijuehitusejärele  
14. I. 35 vt. 111

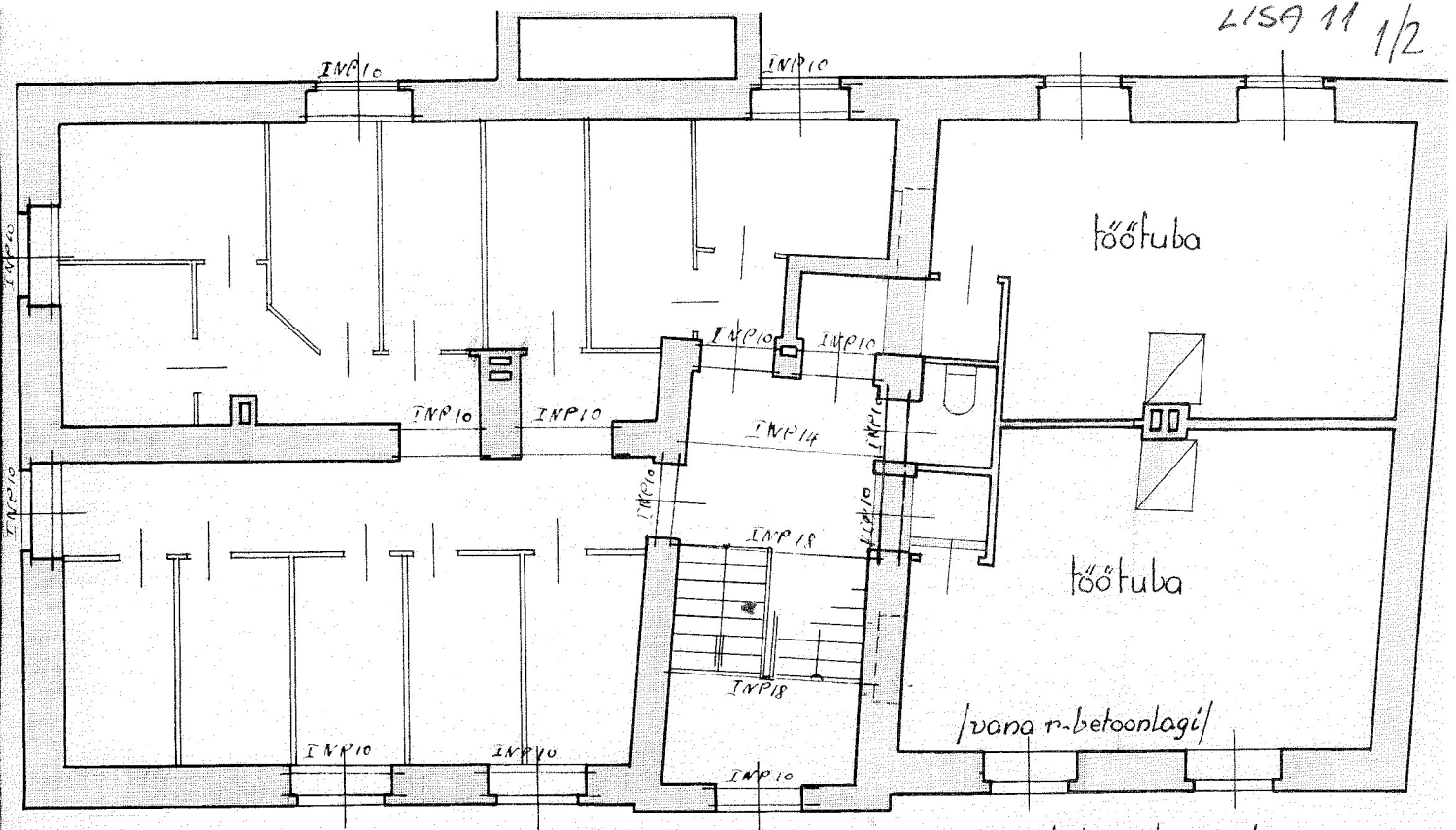
lõige seinast 1:10



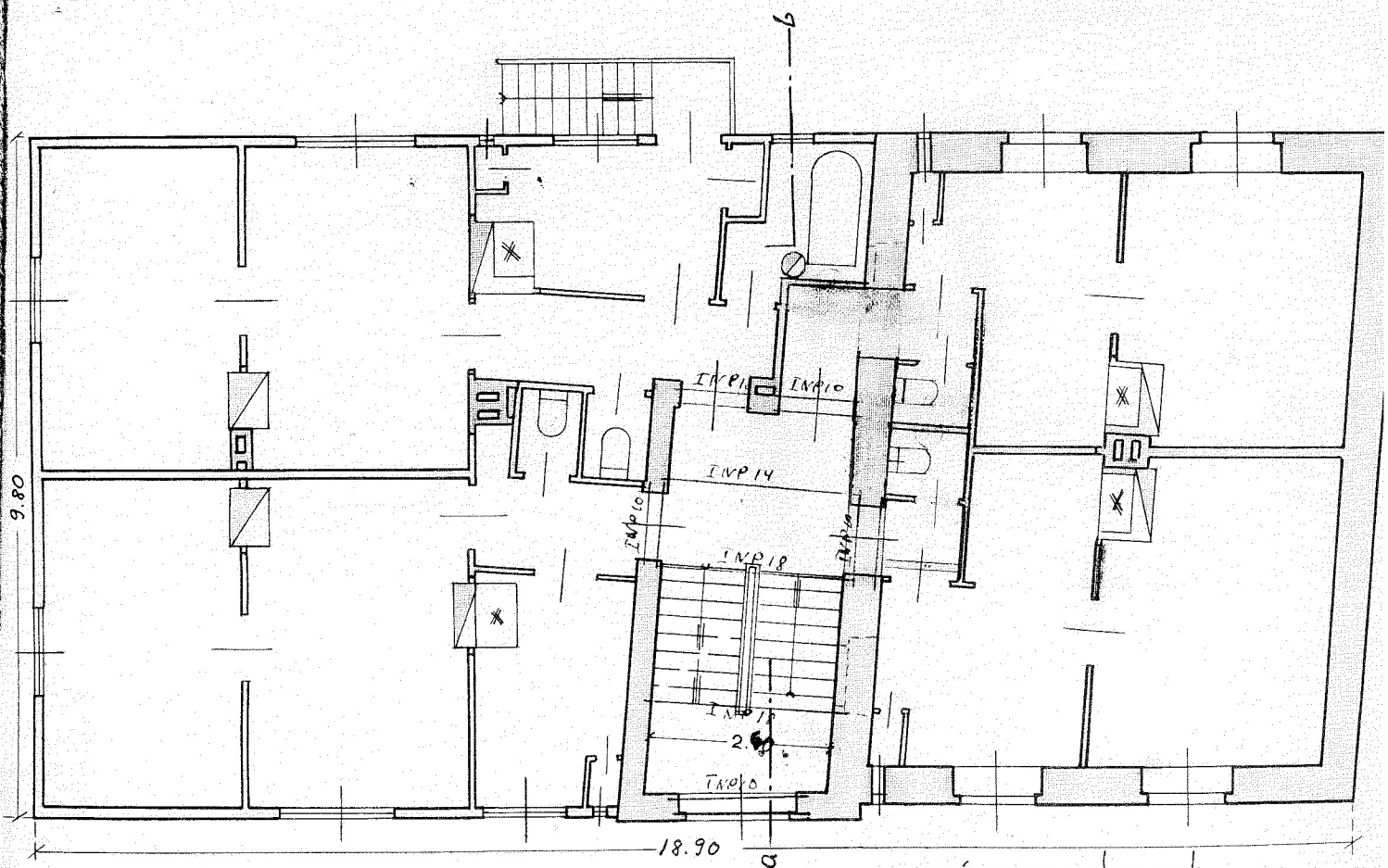
Tallinna Linnaval. Ehitusosakond.  
SAADUD.  
23. I. 1935 № 825



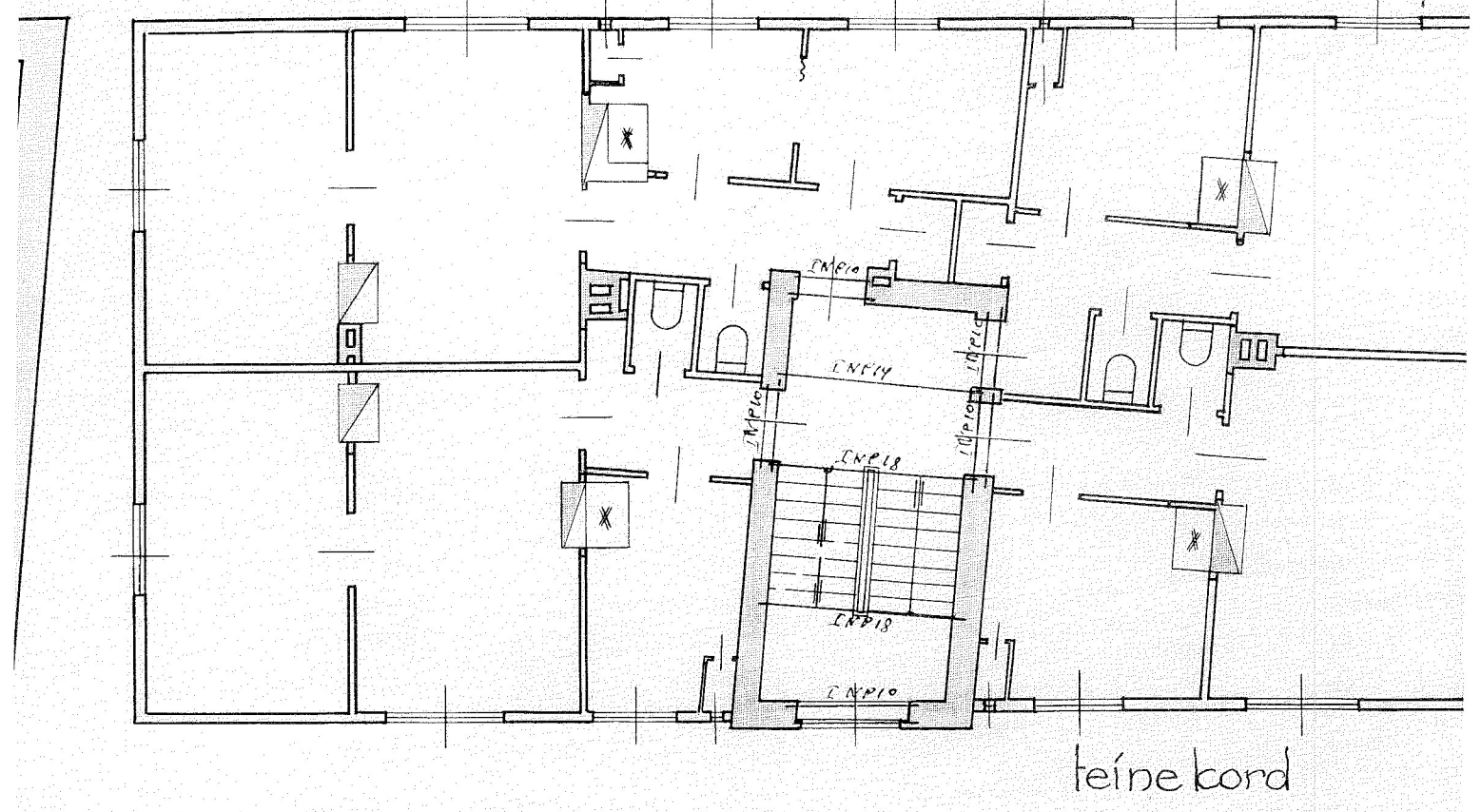
va projekt on Tallinna linnavalitsus  
eest, 22. jaan. 1935 a. kinnitanud 911  
15. jaan. 1935 a. №  
Linnapea J. Saatsi  
Ehitusosakonna direktor. *Chrenkova*



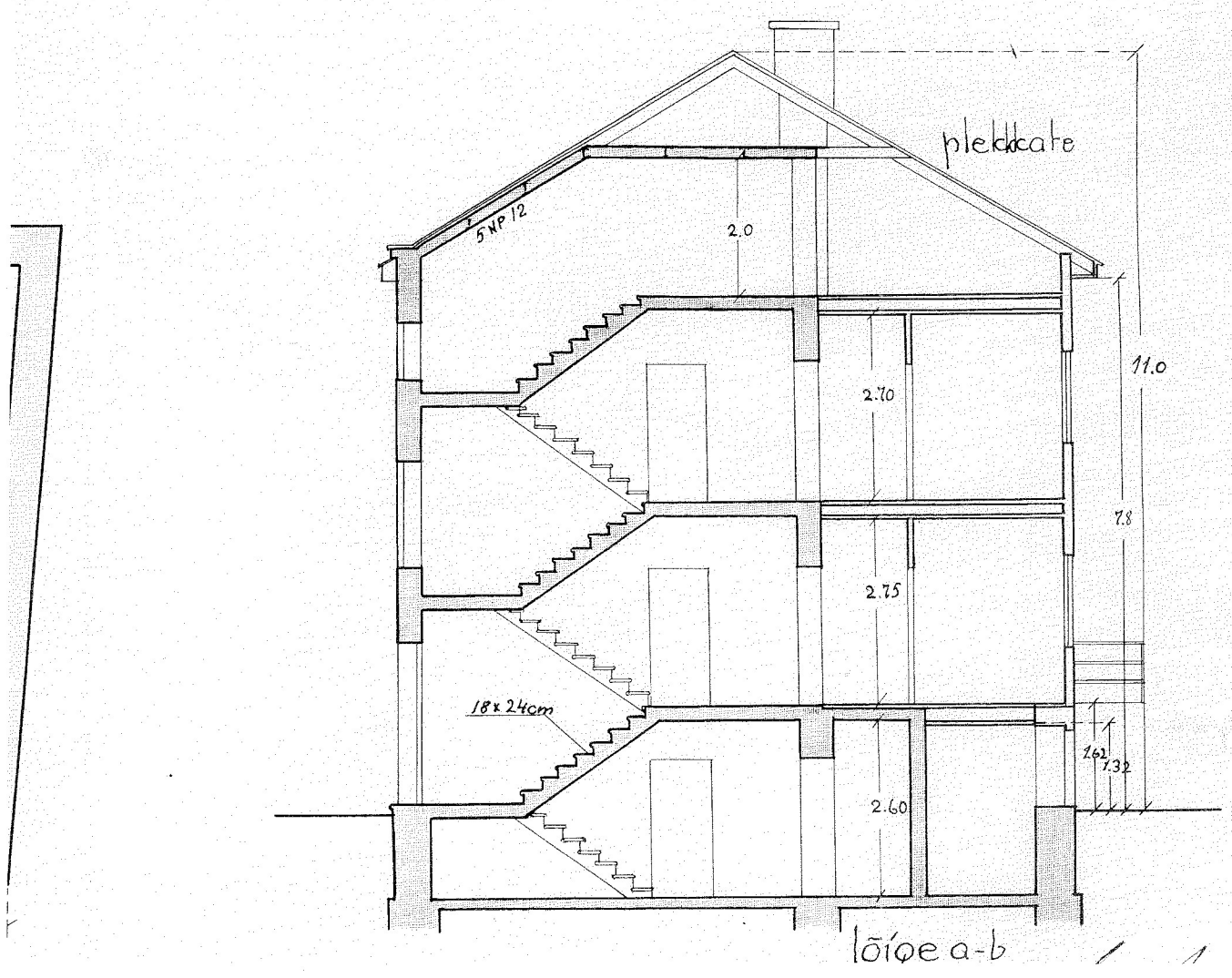
keldri kord



esimene kord



teine kord



lõige a-b





